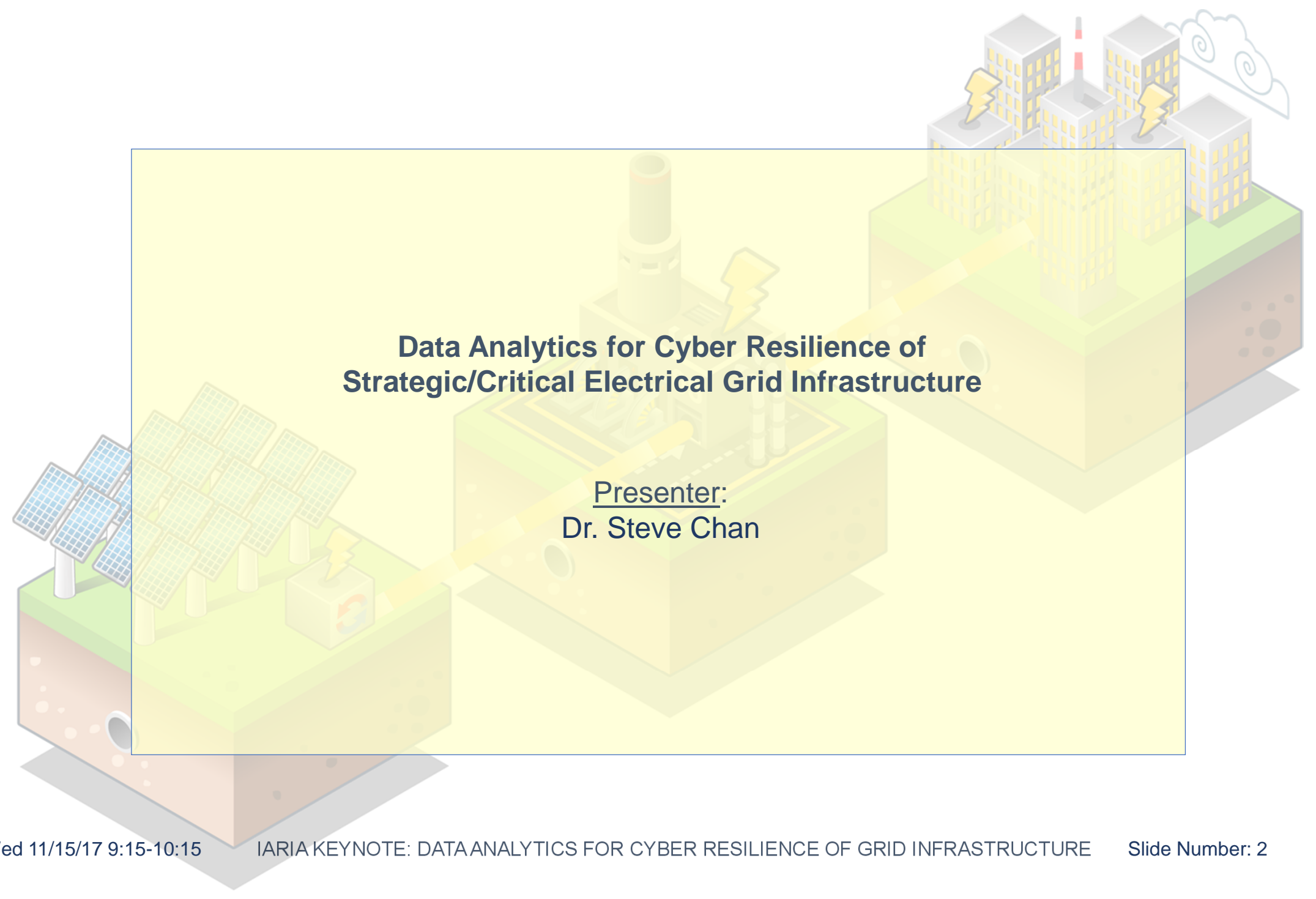




Welcome!

Thank you for joining this session on:

Energy/Cyber Security Assessment
*Data Analytics for Cyber Resilience of
Strategic/Critical Electrical Grid Infrastructure*



**Data Analytics for Cyber Resilience of
Strategic/Critical Electrical Grid Infrastructure**

Presenter:
Dr. Steve Chan



Table of Contents

Energy/Cyber Security Assessment: *Data Analytics for Cyber Resilience of Strategic/Critical Electrical Grid Infrastructure*

Part 1

- ✓ 1) Table of Contents
- 2) Strategic/Critical Infrastructure
- 3) Baselining of Electrical Grid Infrastructure

Part 2

- 4) Connectedness: Internet of Things & Industrial Internet
- 5) Point of View on Data
- 6) Timestamping as a Core Multi-domain Requirement
- 7) Resilient Timestamping at Higher Resolution
- 8) Detection Time for Aberrations with Continuous Streaming Big Data (CSBD)
- 9) The “Cyber Framework” for CSBD

Part 3

- 10) The Paradox
- 11) The Trend of Less Insight
- 12) The Increasing need for Bigger Data

Part 4

- 11) Mission-Critical Venues
- 12) Technical Challenges
- 13) Questions and Answers
- 14) Thank You!

Table of Contents

Energy/Cyber Security Assessment: *Data Analytics for Cyber Resilience of Strategic/Critical Electrical Grid Infrastructure*

Part 1

- 1) Table of Contents
- ✓ 2) **Strategic/Critical Infrastructure**
- 3) Baselining of Electrical Grid Infrastructure

Part 2

- 4) Connectedness: Internet of Things & Industrial Internet
- 5) Point of View on Data
- 6) Timestamping as a Core Multi-domain Requirement
- 7) Resilient Timestamping at Higher Resolution
- 8) Detection Time for Aberrations with Continuous Streaming Big Data (CSBD)
- 9) The “Cyber Framework” for CSBD

Part 3

- 10) The Paradox
- 11) The Trend of Less Insight
- 12) The Increasing need for Bigger Data

Part 4

- 11) Mission-Critical Venues
- 12) Technical Challenges
- 13) Questions and Answers
- 14) Thank You!



Table of Contents

Energy/Cyber Security Assessment: *Data Analytics for Cyber Resilience of Strategic/Critical Electrical Grid Infrastructure*

Part 1

- 1) Table of Contents
- 2) Strategic/Critical Infrastructure
- ✓ 3) **Baselining of Electrical Grid Infrastructure**

Part 2

- 4) Connectedness: Internet of Things & Industrial Internet
- 5) Point of View on Data
- 6) Timestamping as a Core Multi-domain Requirement
- 7) Resilient Timestamping at Higher Resolution
- 8) Detection Time for Aberrations with Continuous Streaming Big Data (CSBD)
- 9) The “Cyber Framework” for CSBD

Part 3

- 10) The Paradox
- 11) The Trend of Less Insight
- 12) The Increasing need for Bigger Data

Part 4

- 11) Mission-Critical Venues
- 12) Technical Challenges
- 13) Questions and Answers
- 14) Thank You!



Table of Contents

Energy/Cyber Security Assessment: *Data Analytics for Cyber Resilience of Strategic/Critical Electrical Grid Infrastructure*

Part 1

- 1) Table of Contents
- 2) Strategic/Critical Infrastructure
- 3) Baseline of Electrical Grid Infrastructure

Part 2

- ✓ 4) **Connectedness: Internet of Things & Industrial Internet**
- 5) Point of View on Data
- 6) Timestamping as a Core Multi-domain Requirement
- 7) Resilient Timestamping at Higher Resolution
- 8) Detection Time for Aberrations with Continuous Streaming Big Data (CSBD)
- 9) The “Cyber Framework” for CSBD

Part 3

- 10) The Paradox
- 11) The Trend of Less Insight
- 12) The Increasing need for Bigger Data

Part 4

- 11) Mission-Critical Venues
- 12) Technical Challenges
- 13) Questions and Answers
- 14) Thank You!

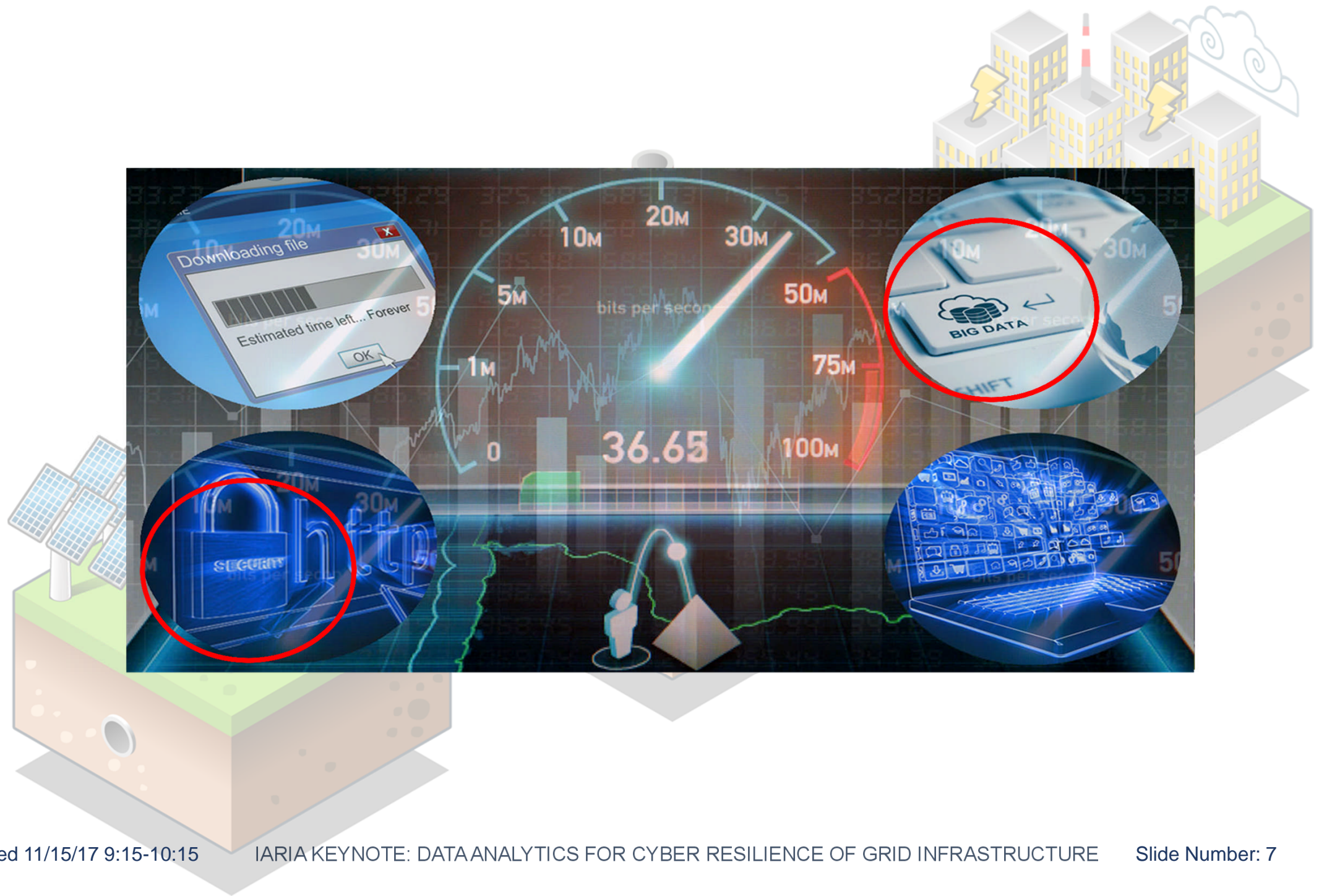




Table of Contents

Energy/Cyber Security Assessment: *Data Analytics for Cyber Resilience of Strategic/Critical Electrical Grid Infrastructure*

Part 1

- 1) Table of Contents
- 2) Strategic/Critical Infrastructure
- 3) Baselining of Electrical Grid Infrastructure

Part 2

- 4) Connectedness: Internet of Things & Industrial Internet
- ✓ 5) Point of View on Data
- 6) Timestamping as a Core Multi-domain Requirement
- 7) Resilient Timestamping at Higher Resolution
- 8) Detection Time for Aberrations with Continuous Streaming Big Data (CSBD)
- 9) The “Cyber Framework” for CSBD

Part 3

- 10) The Paradox
- 11) The Trend of Less Insight
- 12) The Increasing need for Bigger Data

Part 4

- 11) Mission-Critical Venues
- 12) Technical Challenges
- 13) Questions and Answers
- 14) Thank You!

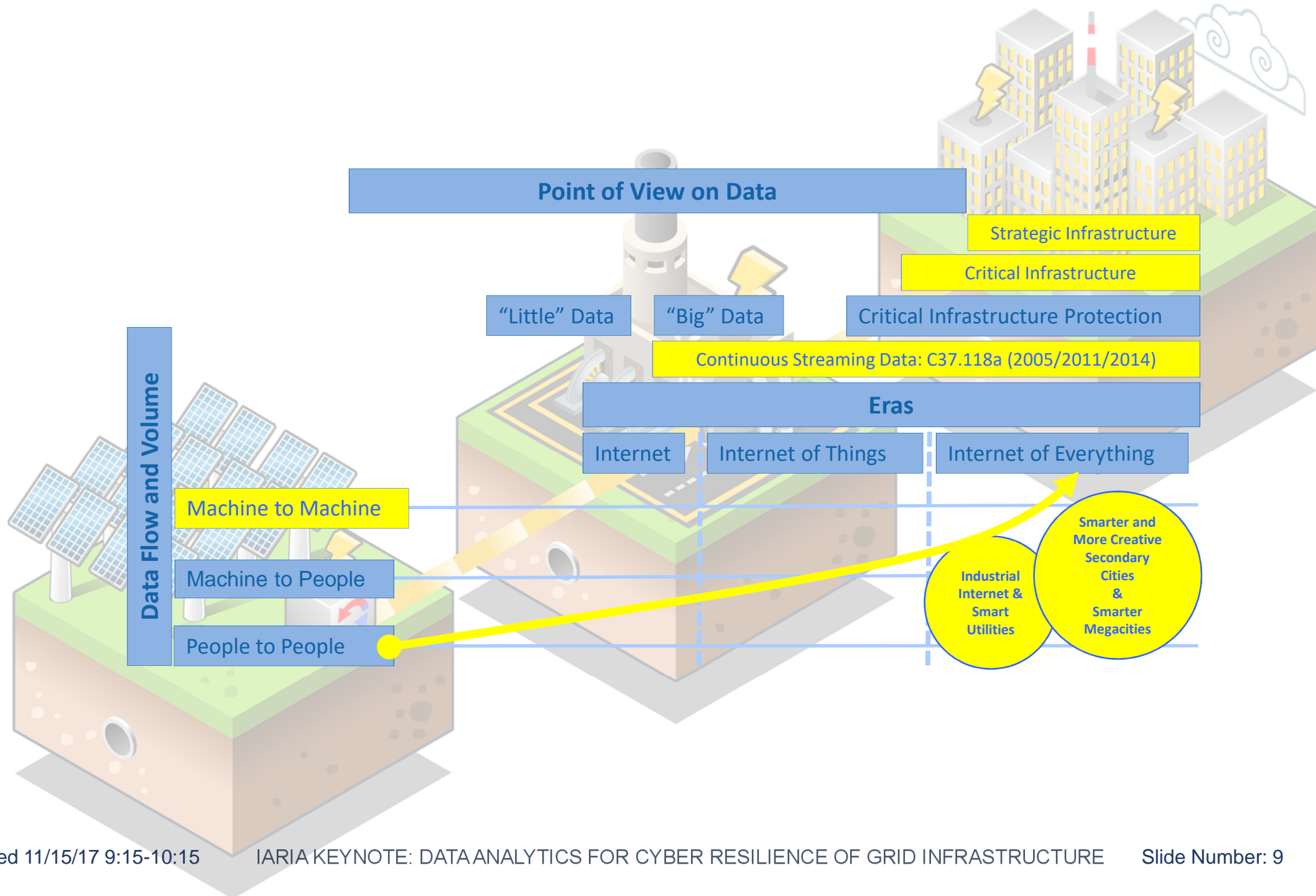




Table of Contents

Energy/Cyber Security Assessment: *Data Analytics for Cyber Resilience of Strategic/Critical Electrical Grid Infrastructure*

Part 1

- 1) Table of Contents
- 2) Strategic/Critical Infrastructure
- 3) Baselineing of Electrical Grid Infrastructure

Part 2

- 4) Connectedness: Internet of Things & Industrial Internet
- 5) Point of View on Data
- ✓ 6) **Timestamping as a Core Multi-domain Requirement**
- 7) Resilient Timestamping at Higher Resolution
- 8) Detection Time for Aberrations with Continuous Streaming Big Data (CSBD)
- 9) The “Cyber Framework” for CSBD

Part 3

- 10) The Paradox
- 11) The Trend of Less Insight
- 12) The Increasing need for Bigger Data

Part 4

- 11) Mission-Critical Venues
- 12) Technical Challenges
- 13) Questions and Answers
- 14) Thank You!



Table of Contents

Energy/Cyber Security Assessment: *Data Analytics for Cyber Resilience of Strategic/Critical Electrical Grid Infrastructure*

Part 1

- 1) Table of Contents
- 2) Strategic/Critical Infrastructure
- 3) Baselining of Electrical Grid Infrastructure

Part 2

- 4) Connectedness: Internet of Things & Industrial Internet
- 5) Point of View on Data
- 6) Timestamping as a Core Multi-domain Requirement
- ✓ 7) Resilient Timestamping at Higher Resolution
- 8) Detection Time for Aberrations with Continuous Streaming Big Data (CSBD)
- 9) The “Cyber Framework” for CSBD

Part 3

- 10) The Paradox
- 11) The Trend of Less Insight
- 12) The Increasing need for Bigger Data

Part 4

- 11) Mission-Critical Venues
- 12) Technical Challenges
- 13) Questions and Answers
- 14) Thank You!



Table of Contents

Energy/Cyber Security Assessment: *Data Analytics for Cyber Resilience of Strategic/Critical Electrical Grid Infrastructure*

Part 1

- 1) Table of Contents
- 2) Strategic/Critical Infrastructure
- 3) Baselining of Electrical Grid Infrastructure

Part 2

- 4) Connectedness: Internet of Things & Industrial Internet
- 5) Point of View on Data
- 6) Timestamping as a Core Multi-domain Requirement
- 7) Resilient Timestamping at Higher Resolution
- ✓ 8) Detection Time for Aberrations with Continuous Streaming Big Data (CSBD)
- 9) The “Cyber Framework” for CSBD

Part 3

- 10) The Paradox
- 11) The Trend of Less Insight
- 12) The Increasing need for Bigger Data

Part 4

- 11) Mission-Critical Venues
- 12) Technical Challenges
- 13) Questions and Answers
- 14) Thank You!

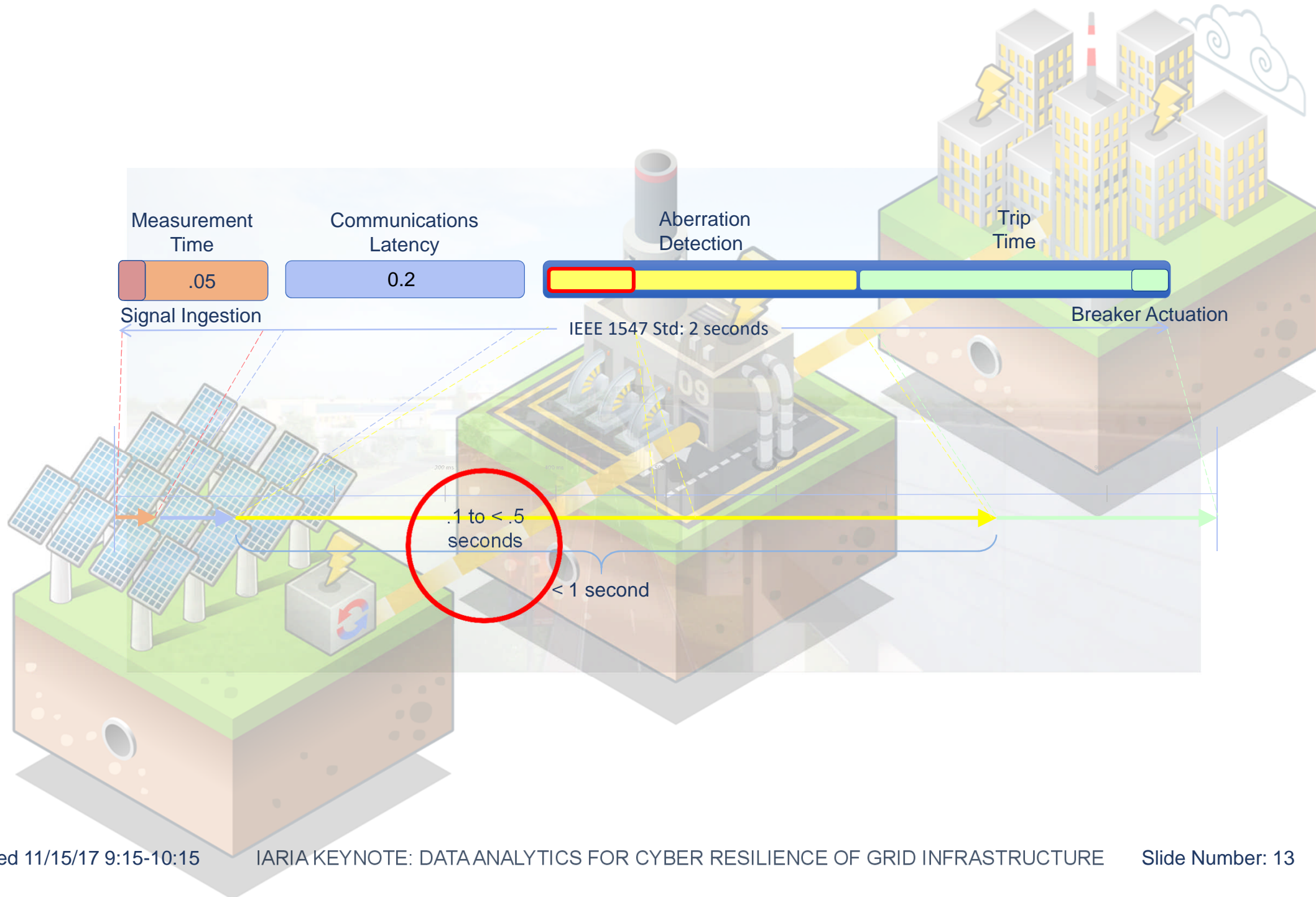




Table of Contents

Energy/Cyber Security Assessment: *Data Analytics for Cyber Resilience of Strategic/Critical Electrical Grid Infrastructure*

Part 1

- 1) Table of Contents
- 2) Strategic/Critical Infrastructure
- 3) Baselining of Electrical Grid Infrastructure

Part 2

- 4) Connectedness: Internet of Things & Industrial Internet
- 5) Point of View on Data
- 6) Timestamping as a Core Multi-domain Requirement
- 7) Resilient Timestamping at Higher Resolution
- 8) Detection Time for Aberrations with Continuous Streaming Big Data (CSBD)
- ✓9) The “Cyber Framework” for CSBD

Part 3

- 10) The Paradox
- 11) The Trend of Less Insight
- 12) The Increasing need for Bigger Data

Part 4

- 11) Mission-Critical Venues
- 12) Technical Challenges
- 13) Questions and Answers
- 14) Thank You!



Table of Contents

Energy/Cyber Security Assessment: *Data Analytics for Cyber Resilience of Strategic/Critical Electrical Grid Infrastructure*

Part 1

- 1) Table of Contents
- 2) Strategic/Critical Infrastructure
- 3) Baselining of Electrical Grid Infrastructure

Part 2

- 4) Connectedness: Internet of Things & Industrial Internet
- 5) Point of View on Data
- 6) Timestamping as a Core Multi-domain Requirement
- 7) Resilient Timestamping at Higher Resolution
- 8) Detection Time for Aberrations with Continuous Streaming Big Data (CSBD)
- 9) The “Cyber Framework” for CSBD

Part 3

- ✓ 10) The Paradox
- 11) The Trend of Less Insight
- 12) The Increasing need for Bigger Data

Part 4

- 11) Mission-Critical Venues
- 12) Technical Challenges
- 13) Questions and Answers
- 14) Thank You!

Microgrid Stability Paradox

Microgrids are expected to provide a higher level of availability than the current Grid paradigm. Yet, the microgrids' high use of renewables results in less stable operation of the distribution system and introduces heightened instability.





Table of Contents

Energy/Cyber Security Assessment: *Data Analytics for Cyber Resilience of Strategic/Critical Electrical Grid Infrastructure*

Part 1

- 1) Table of Contents
- 2) Strategic/Critical Infrastructure
- 3) Baselining of Electrical Grid Infrastructure

Part 2

- 4) Connectedness: Internet of Things & Industrial Internet
- 5) Point of View on Data
- 6) Timestamping as a Core Multi-domain Requirement
- 7) Resilient Timestamping at Higher Resolution
- 8) Detection Time for Aberrations with Continuous Streaming Big Data (CSBD)
- 9) The “Cyber Framework” for CSBD

Part 3

- 10) The Paradox
- ✓ 11) The Trend of Less Insight
- 12) The Increasing need for Bigger Data

Part 4

- 11) Mission-Critical Venues
- 12) Technical Challenges
- 13) Questions and Answers
- 14) Thank You!

Table of Contents

Energy/Cyber Security Assessment: *Data Analytics for Cyber Resilience of Strategic/Critical Electrical Grid Infrastructure*

Part 1

- 1) Table of Contents
- 2) Strategic/Critical Infrastructure
- 3) Baseline of Electrical Grid Infrastructure

Part 2

- 4) Connectedness: Internet of Things & Industrial Internet
- 5) Point of View on Data
- 6) Timestamping as a Core Multi-domain Requirement
- 7) Resilient Timestamping at Higher Resolution
- 8) Detection Time for Aberrations with Continuous Streaming Big Data (CSBD)
- 9) The “Cyber Framework” for CSBD

Part 3

- 10) The Paradox
- 11) The Trend of Less Insight
- ✓ 12) The Increasing need for Bigger Data

Part 4

- 11) Mission-Critical Venues
- 12) Technical Challenges
- 13) Questions and Answers
- 14) Thank You!



Table of Contents

Energy/Cyber Security Assessment: *Data Analytics for Cyber Resilience of Strategic/Critical Electrical Grid Infrastructure*

Part 1

- 1) Table of Contents
- 2) Strategic/Critical Infrastructure
- 3) Baseline of Electrical Grid Infrastructure

Part 2

- 4) Connectedness: Internet of Things & Industrial Internet
- 5) Point of View on Data
- 6) Timestamping as a Core Multi-domain Requirement
- 7) Resilient Timestamping at Higher Resolution
- 8) Detection Time for Aberrations with Continuous Streaming Big Data (CSBD)
- 9) The “Cyber Framework” for CSBD

Part 3

- 10) The Paradox
- 11) The Trend of Less Insight
- 12) The Increasing need for Bigger Data

Part 4

- ✓ 11) **Mission-Critical Venues**
- 12) Technical Challenges
- 13) Questions and Answers
- 14) Thank You!



Table of Contents

Energy/Cyber Security Assessment: *Data Analytics for Cyber Resilience of Strategic/Critical Electrical Grid Infrastructure*

Part 1

- 1) Table of Contents
- 2) Strategic/Critical Infrastructure
- 3) Baselining of Electrical Grid Infrastructure

Part 2

- 4) Connectedness: Internet of Things & Industrial Internet
- 5) Point of View on Data
- 6) Timestamping as a Core Multi-domain Requirement
- 7) Resilient Timestamping at Higher Resolution
- 8) Detection Time for Aberrations with Continuous Streaming Big Data (CSBD)
- 9) The “Cyber Framework” for CSBD

Part 3

- 10) The Paradox
- 11) The Trend of Less Insight
- 12) The Increasing need for Bigger Data

Part 4

- 11) Mission-Critical Venues
- ✓ 12) **Technical Challenges**
- 13) Questions and Answers
- 14) Thank You!



Table of Contents

Energy/Cyber Security Assessment: *Data Analytics for Cyber Resilience of Strategic/Critical Electrical Grid Infrastructure*

Part 1

- 1) Table of Contents
- 2) Strategic/Critical Infrastructure
- 3) Baselining of Electrical Grid Infrastructure

Part 2

- 4) Connectedness: Internet of Things & Industrial Internet
- 5) Point of View on Data
- 6) Timestamping as a Core Multi-domain Requirement
- 7) Resilient Timestamping at Higher Resolution
- 8) Detection Time for Aberrations with Continuous Streaming Big Data (CSBD)
- 9) The “Cyber Framework” for CSBD

Part 3

- 10) The Paradox
- 11) The Trend of Less Insight
- 12) The Increasing need for Bigger Data

Part 4

- 11) Mission-Critical Venues
- 12) Technical Challenges
- ✓ 13) Questions and Answers
- 14) Thank You!

Table of Contents

Energy/Cyber Security Assessment: *Data Analytics for Cyber Resilience of Strategic/Critical Electrical Grid Infrastructure*

Part 1

- 1) Table of Contents
- 2) Strategic/Critical Infrastructure
- 3) Baseline of Electrical Grid Infrastructure

Part 2

- 4) Connectedness: Internet of Things & Industrial Internet
- 5) Point of View on Data
- 6) Timestamping as a Core Multi-domain Requirement
- 7) Resilient Timestamping at Higher Resolution
- 8) Detection Time for Aberrations with Continuous Streaming Big Data (CSBD)
- 9) The “Cyber Framework” for CSBD

Part 3

- 10) The Paradox
- 11) The Trend of Less Insight
- 12) The Increasing need for Bigger Data

Part 4

- 11) Mission-Critical Venues
- 12) Technical Challenges
- 13) Questions and Answers
- ✓ 14) Thank You!



Thank You!

...for attending this IARIA Session:

Acknowledgements to Petre, Organizing Committee,
Reviewers, and all attending!