

**The Eighth International Conference on Bioenvironment,
Biodiversity and Renewable Energies – BIONATURE 2017**

Open Interview

Interviewer: Petre Dini, IARIA

**Expert Scientist: S. V. Nghiem
NASA Jet Propulsion Laboratory
California Institute of Technology
Pasadena, California, USA**

24 May 2017

© 2017. All rights reserved.

Global Urbanization and Impacts on the Bio-environments

Results and findings from the NASA Interdisciplinary Research in Earth Science (IDS) Authors and Contributors from IDS Science Team
<https://urban.jpl.nasa.gov/>



Interdisciplinary Science Team

PI: Son V. Nghiem, Jet Propulsion Laboratory, CA, USA.

Co-Is: Mark Jacobson, Stanford University, CA, USA; Chris Small, LDEO, Columbia University, NY, USA; Deborah Balk, City University of New York, USA.

Collaborators: M. Masetti, University of Milan, Italy; A. Sorichetta and A. Tatem, University of Southampton, UK; C. Linard, University of Brussels, Belgium; D. Hall, NASA GSFC, USA; A. Richter, University of Bremen, Germany; U. Deichmann, The World Bank; K. Gurney, Arizona State University, USA, P. Shepson, Purdue University, USA; C. Field, Carnegie Institution, USA; P. Fabbri and M. Pola, University of Padova, Italy; A. Gargini, University of Bologna, Italy; F. Celico, University of Parma, Italy; M. Deserti, ARPA Emilia Romagna, Italy; F. Catani, University of Florence, Italy; P. Pampaloni and S. Paloscia, IFAC-CNR, Italy; G. R. Brakenridge, University of Colorado, USA; P. Morin, U. of Minnesota, USA; E. Strauss, LMU/LA Center for Urban Res., USA; M. Kafatos, Chapman U.; G. Henebry, SDSU ...

Objective Addressed with a New Paradigm

- **Objectives:** Detect and quantify the rural-urban transformation, and investigate its cause and impacts on the environment, agriculture, multi hazards (e.g., flood, drought, cyclone/supercyclone), demographic/population dynamics, human health (e.g., vector-borne diseases, malaria, zika), and socio-economic vulnerability in a changing climate across the world.
- **A new paradigm:** Rural-urban transformation over the landscape will be quantitatively evaluated as a time-space continuum, extensively in space (global) and in time (decadal), rather than a disparate array of individual bounded cities in separated areas and in a discontinuous collection of points in time.

**The Eighth International Conference on Bioenvironment,
Biodiversity and Renewable Energies – BIONATURE 2017**

**Q1. What are the
approaches for
monitoring global
urbanization?**

**Open Interview
24 May 2017**

Global Urban Monitoring

- **High-resolution optical imagery: WorldView 1, 2, 3. Sub-meter resolution, very small coverage. Collected at different and separated points in time, commercial, costly.**
- **Multi-spectral imagery: Landsat series, Sentinel-2 MSI, 10s-meter resolution, free and accessible data. Collected at different and separated points in time, obscured by cloud cover and darkness.**
- **Satellite Synthetic Aperture Radars (SAR): NASA SRTM (2000), TanDEM-X, Sentinel-1A and 1B SAR, 10s-meter resolution, some data are free and accessible.**

ALL ARE FOR 2D LATERAL OBSERVATIONS

Dense Sampling Method

Patent US8401793, US20100280756, WO2010127140A3

Enable global urban observations without gaps in times/space, 1-km grid, 2000-2009

$$\bar{\sigma}_0 = \frac{1}{N} \sum_{i=1}^N \bar{\sigma}_0(\phi_i, t_i) = \frac{1}{N\Gamma_A} \sum_{i=1}^N \iint_A dx dy G(\phi_i, x, y) \sigma_0(\phi_i, t_i, x, y)$$

$$\sigma_0(\phi_i, t_i, x, y) = \bar{\sigma}_0(x, y) + \varepsilon(\phi_i, t_i, x, y)$$

$$\bar{\sigma}_{0M} = \frac{1}{\Gamma_A} \iint_A dx dy \left[\sum_{i=1}^N \frac{G(\phi_i, x, y)}{N} \right] \bar{\sigma}_0(x, y)$$

$$\mathcal{R} = \frac{1}{\Gamma_A} \iint_A dx dy \sum_{i=1}^N \left[\frac{G(\phi_i, x, y)}{N} \varepsilon(\phi_i, t_i, x, y) \right]$$

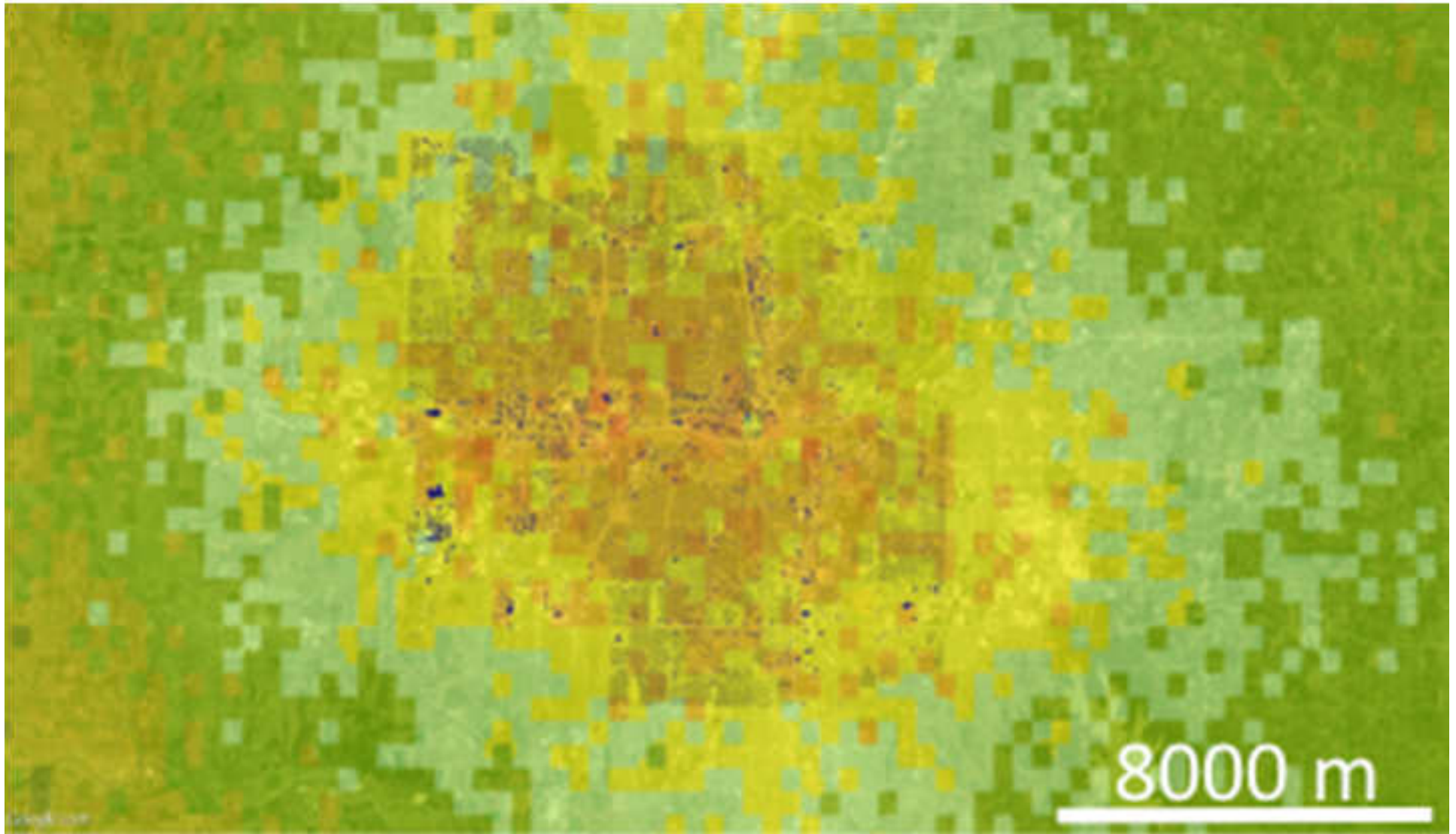
Dynamic Atlas of Global Continuum of LCLUC

DSM: All Mega Cities Worldwide

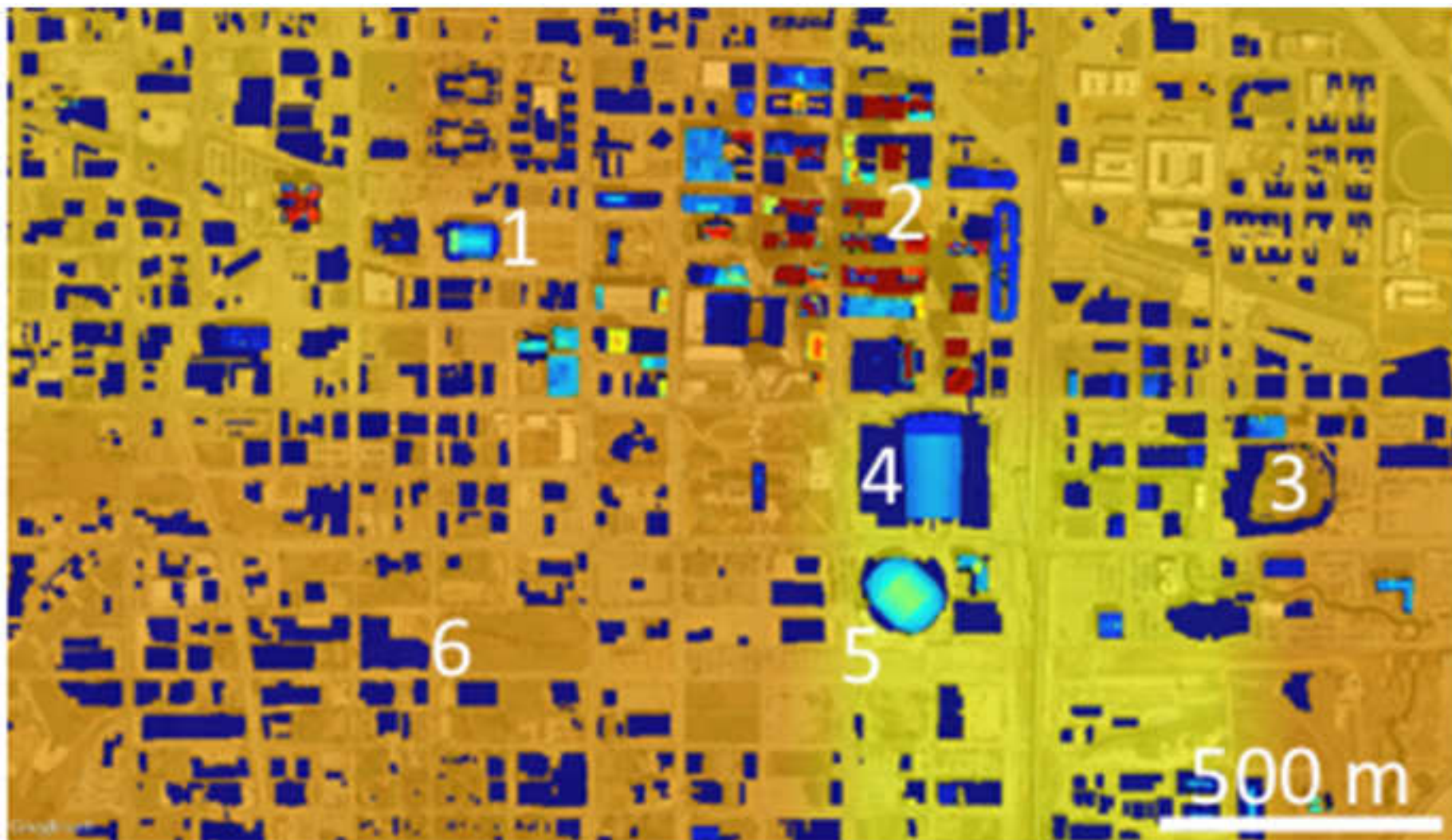
Rank	Mega city	Country	Continent	Population	DSM Latitude (°)		DSM Longitude (°)	
1	Tokyo	 Japan	Asia	34,800,000	33.8	37.9	137.5	142.3
2	Guangzhou	 China	Asia	31,700,000	21.0	25.0	111.2	115.5
3	Shanghai	 China	Asia	28,900,000	30.4	31.9	120.4	122.6
4	Jakarta	 Indonesia	Asia	26,400,000	-6.8	-5.6	106.1	107.5
5	Seoul	 South Korea	Asia	25,800,000	37.0	38.0	126.3	127.8
6	Delhi	 India	Asia	24,000,000	28.2	29.1	76.6	77.7
7	Mexico City	 Mexico	North America	23,800,000	18.4	20.5	-99.9	-98.1
8	Karachi	 Pakistan	Asia	22,700,000	24.4	25.2	66.5	67.6
9	Manila	 Philippines	Asia	22,200,000	14.0	15.2	120.6	121.5
10	New York City	 United States	North America	21,600,000	39.9	41.5	-76.1	-71.6
11	São Paulo	 Brazil	South America	21,500,000	-24.2	-22.9	-47.6	-45.5
12	Mumbai	 India	Asia	21,400,000	18.5	19.7	72.6	73.4
13	Beijing	 China	Asia	19,300,000	39.2	40.7	115.5	117.3
14	Los Angeles	 United States	North America	17,200,000	32.8	34.9	-120.0	-116.2
15	Osaka	 Japan	Asia	16,800,000	33.8	35.4	134.2	136.4
16	Moscow	 Russia	Europe	16,500,000	55.3	56.2	36.9	38.4
17	Dhaka	 Bangladesh	Asia	16,300,000	23.4	24.1	90.1	90.7
18	Cairo	 Egypt	Africa	16,100,000	29.7	30.4	30.8	31.7
19	Kolkata	 India	Asia	16,000,000	21.9	23.3	87.7	88.8
20	London	 United Kingdom	Europe	15,500,000	51.0	52.0	-1.1	1.0
21	Buenos Aires	 Argentina	South America	14,500,000	-35.4	-33.9	-59.5	-57.2
21	Bangkok	 Thailand	Asia	14,500,000	13.0	14.8	99.7	101.3
23	Istanbul	 Turkey	Europe/Asia	13,800,000	40.4	41.6	27.9	30.2
24	Lagos	 Nigeria	Africa	13,200,000	6.0	7.3	2.7	4.2
25	Tehran	 Iran	Asia	13,200,000	35.3	36.1	50.8	51.9
26	Rio de Janeiro	 Brazil	South America	12,900,000	-23.4	-22.3	-44.2	-42.4
27	Shenzhen	 China	Asia	11,700,000	21.5	24.0	112.4	115.0
28	Paris	 France	Europe	10,700,000	48.5	49.2	1.7	2.9
29	Tianjin	 China	Asia	10,600,000	38.6	39.6	116.6	118.0

3D Oklahoma City in 2006

Building volume overlaid on DSM radar signature



Building volume from Oklahoma State University in collaboration with JPL under a NASA EPSCoR project



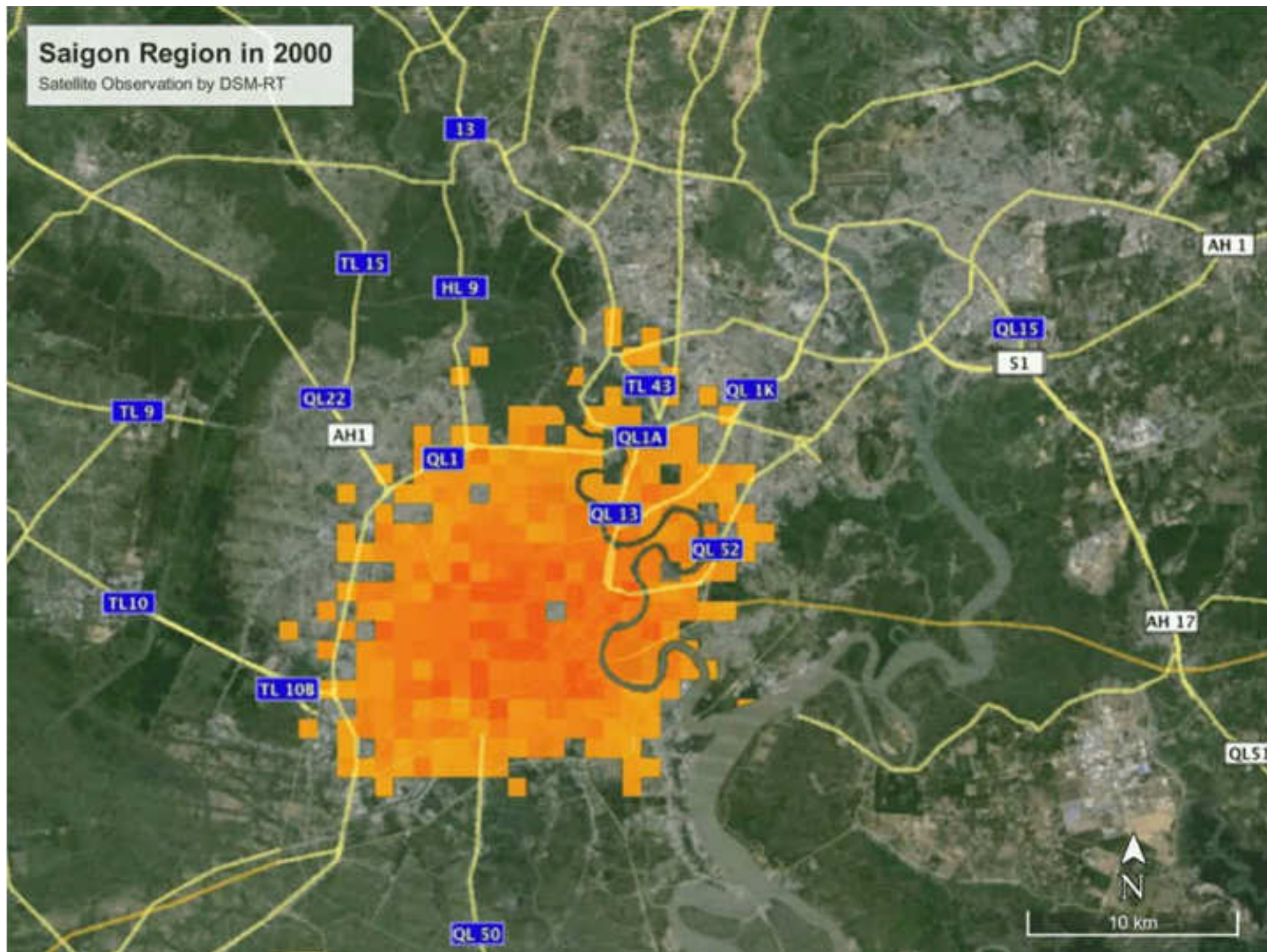
20 25 30 35 40 45

Building volume (m^3 per 1m^2 pixel)

Building volume from Oklahoma State University in collaboration with JPL under a NASA EPSCoR project

Saigon Region in 2000

Satellite Observation by DSM-RT



**The Eighth International Conference on Bioenvironment,
Biodiversity and Renewable Energies – BIONATURE 2017**

**Q2. Can current
methods deal with
urban modeling
complexity?**

**Open Interview
24 May 2017**

Modeling – GATOR-GCMOM from global circulation to urban scale

Model by Jacobson: <http://web.stanford.edu/group/efmh/jacobson/GATOR/>

Gas, Aerosol, Transport, Radiation, General Circulation, Mesoscale, and Ocean Model .

GATOR-GCMOM is used to simulate the global, regional, and urban climate and air pollution health impacts resulting from urbanization. The goal is to investigate effects on climate and air quality of annual changes in the extent of urbanization over regions of mega urbanization in Asia and to compare with other regions in the 2000s.

Modeling – GATOR-GCMOM

from global circulation to urban scale

Model by Jacobson: <http://web.stanford.edu/group/efmh/jacobson/GATOR/>

This model nests climate, meteorological, gas, aerosol, and radiative parameters simultaneously from the global through urban scale. simulates meteorology and its feedback among gases, aerosol particles, cloud hydrometeor particles, surfaces, and radiation. Gas processes include emissions, photochemistry, gas-to-particle conversion, gas-to-hydrometeor conversion and exchange, gas-ocean exchange, advection, convection, molecular diffusion, turbulent diffusion, and dry deposition.

Modeling – GATOR-GCMOM

from global circulation to urban scale

Model by Jacobson: <http://web.stanford.edu/group/efmh/jacobson/GATOR/>

At the land surface, each subgrid soil class is divided into vegetated and bare soil. Snow can accumulate on both soil and vegetation. For bare and vegetated soil, the surface energy balance equation accounts for latent heat, sensible heat, solar, thermal-IR, and energy fluxes.

Modeling – GATOR-GCMOM

from global circulation to urban scale

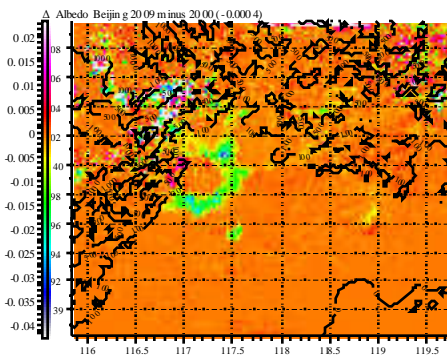
Model by Jacobson: <http://web.stanford.edu/group/efmh/jacobson/GATOR/>

Oceans are represented in 3-D for some calculations and 2-D for others. A 2-D time-dependent mixed-layer ocean dynamics model driven by surface wind stress is used to solve for mixed-layer velocities, heights, and horizontal energy transport in each cell. The scheme conserves potential enstrophy, vorticity, energy, and mass and predicts gyres and major currents. Air ocean exchange, vertical diffusion, 3-D ocean equilibrium chemistry and pH are solved among the Na-Cl-Mg-Ca-K-H-O-Li-Sr-C-S-N-Br-F-B-Si-P system.

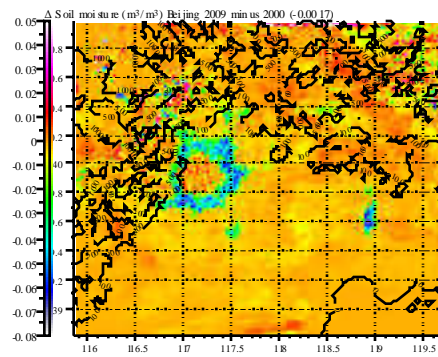
Modeling – GATOR-GCMOM

Mega urbanization impacts in 2000s

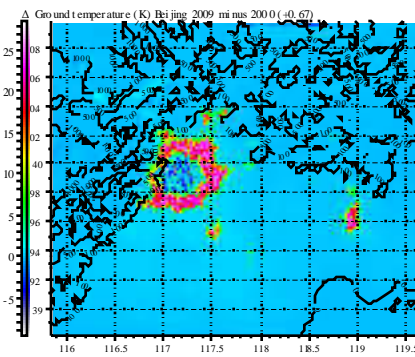
Quantifying changes in 2000-2009



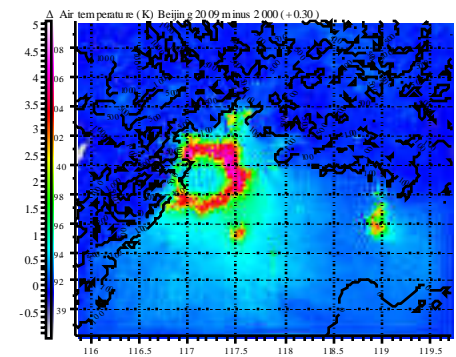
Albedo Change



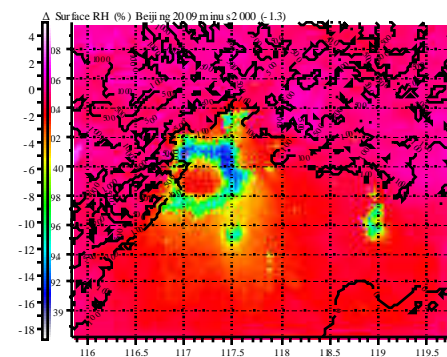
Soil Moisture Change



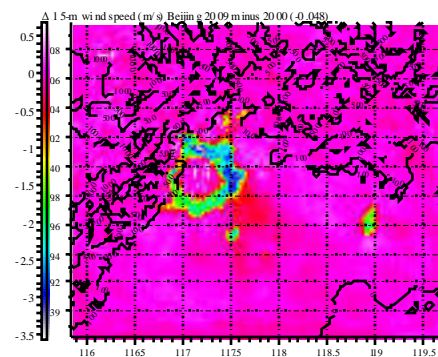
Ground Temperature



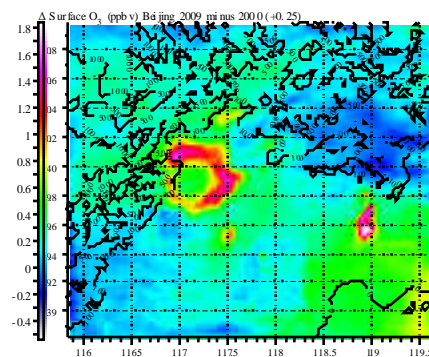
Surface Air Temperature



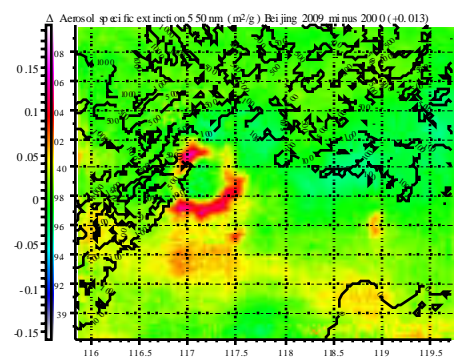
Surface Rel. Humidity



15-m Wind Speed



Surface Ozone



Aerosol Spc. Extinction

Model – GATOR-GCMOM

Mega urbanization impacts in 2000s

“Ring Around the Beijing”

- **Increasing urban heat**
- **Drier soil condition**
- **More air stagnation**
- **Worse smog condition**
- **More ozone pollution**
- **More pollutant mixing upward**

**The Eighth International Conference on Bioenvironment,
Biodiversity and Renewable Energies – BIONATURE 2017**

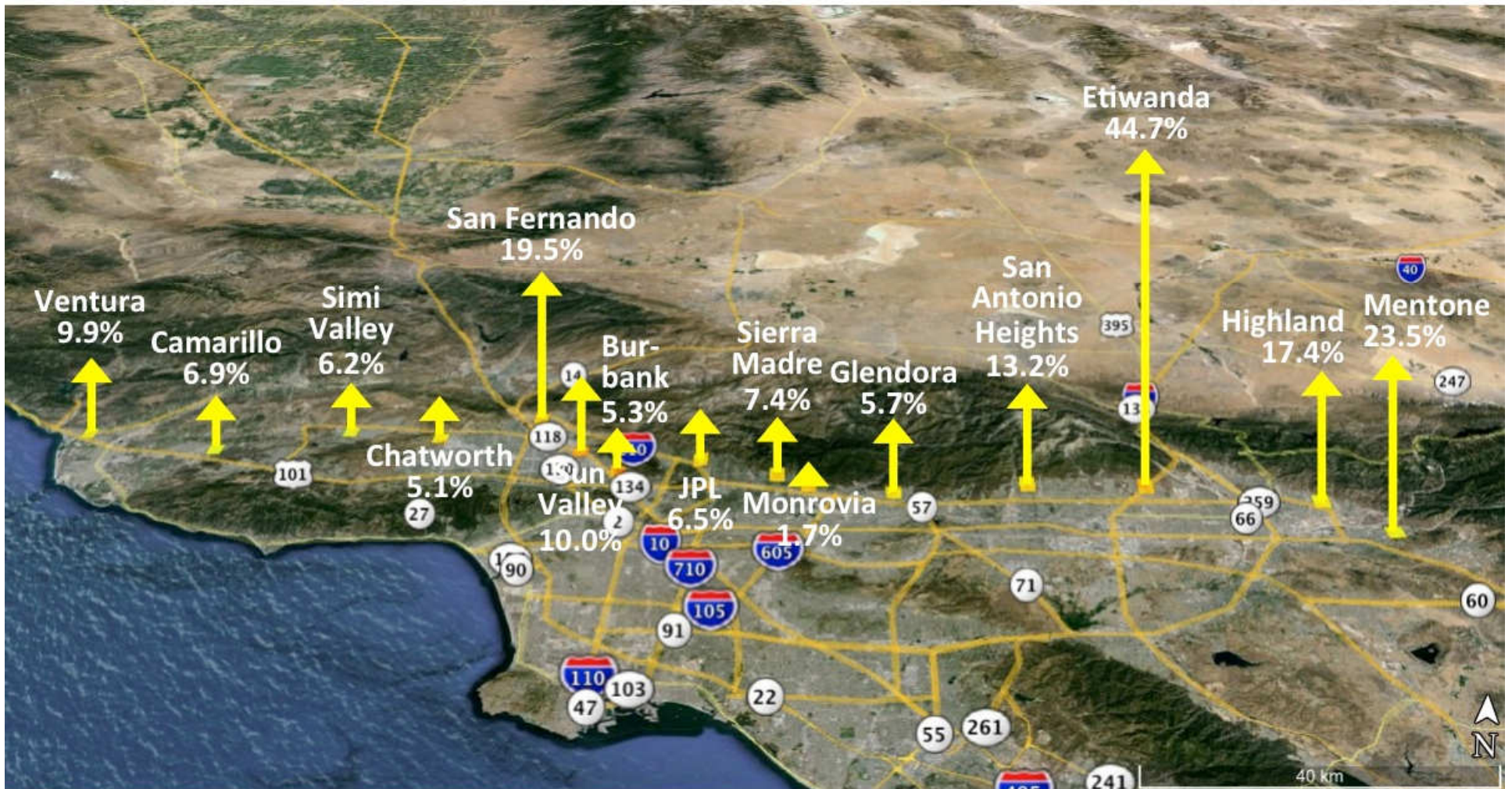
**Q3. What are the
main challenges in
environmental
sensing?**

**Open Interview
24 May 2017**

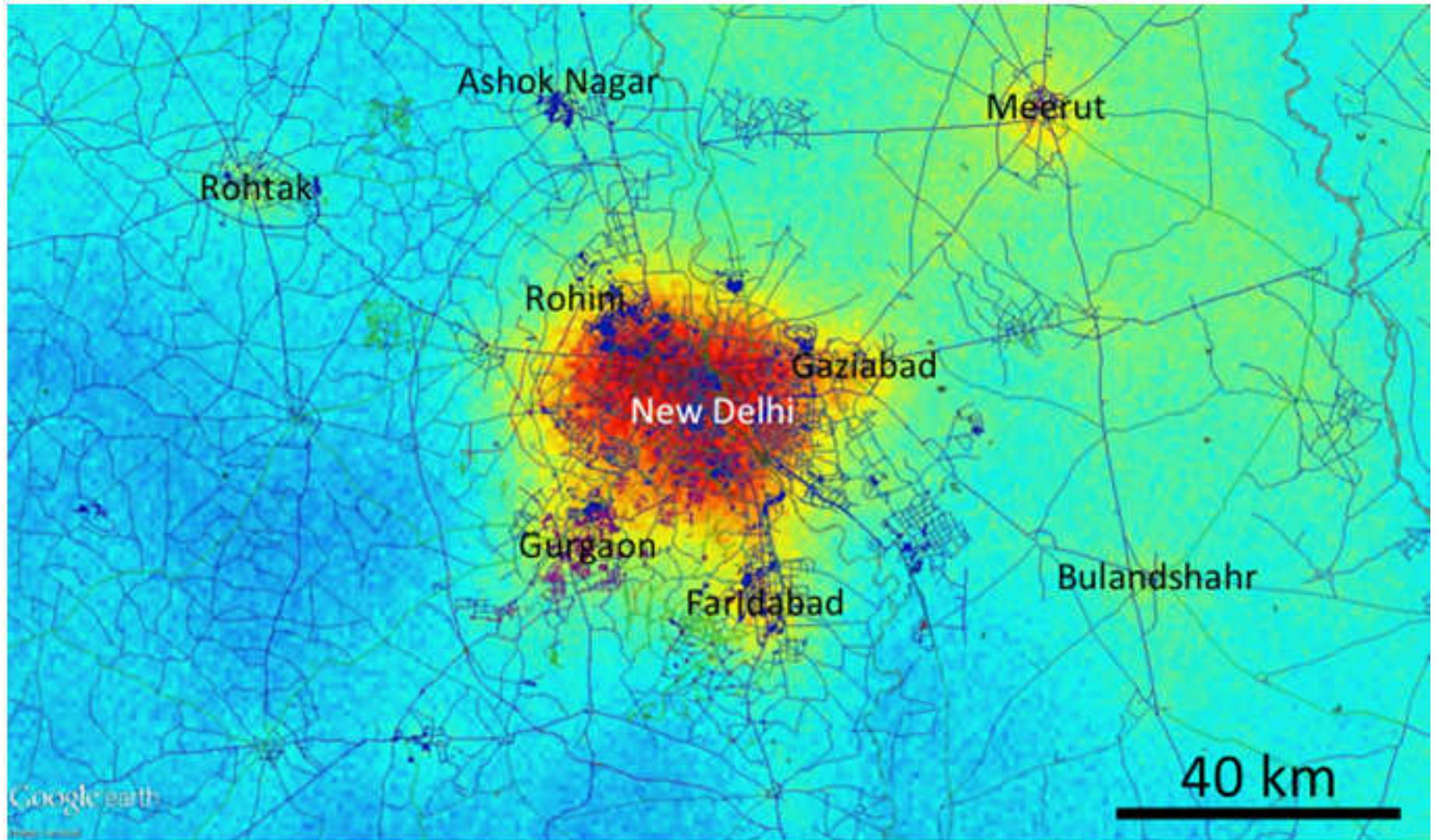
Main Challenges in Environmental sensing

- **Surface monitoring networks:** Temperature, pressure, rain, snow, soil moisture, stream flow, chemical and bio contaminants, etc. Cross-calibration, bias, data quality, consistency, continuity, coverage, etc.
- **Satellite monitoring systems:** Multiple types remote sensing instrument, array of environmental parameters over land, ocean, air and subsurface. Cross-calibration, bias, data quality, consistency, continuity, coverage, etc.
- **Connection between natural/environmental and human/socioeconomic dimensions:** Interdisciplinary science and applications. Need right kinds of parameters and right data.

Rate of Change of Urban Vertical Built-Up in WUI in the Decade of the 2000s (in % per decade) 14 cities and JPL from Ventura to Mentone, CA



DSM Y-Intercept Continuum with OSM Road Network and SRTM Water Bodies



-14

-12

-10

-8

-6

**The Eighth International Conference on Bioenvironment,
Biodiversity and Renewable Energies – BIONATURE 2017**

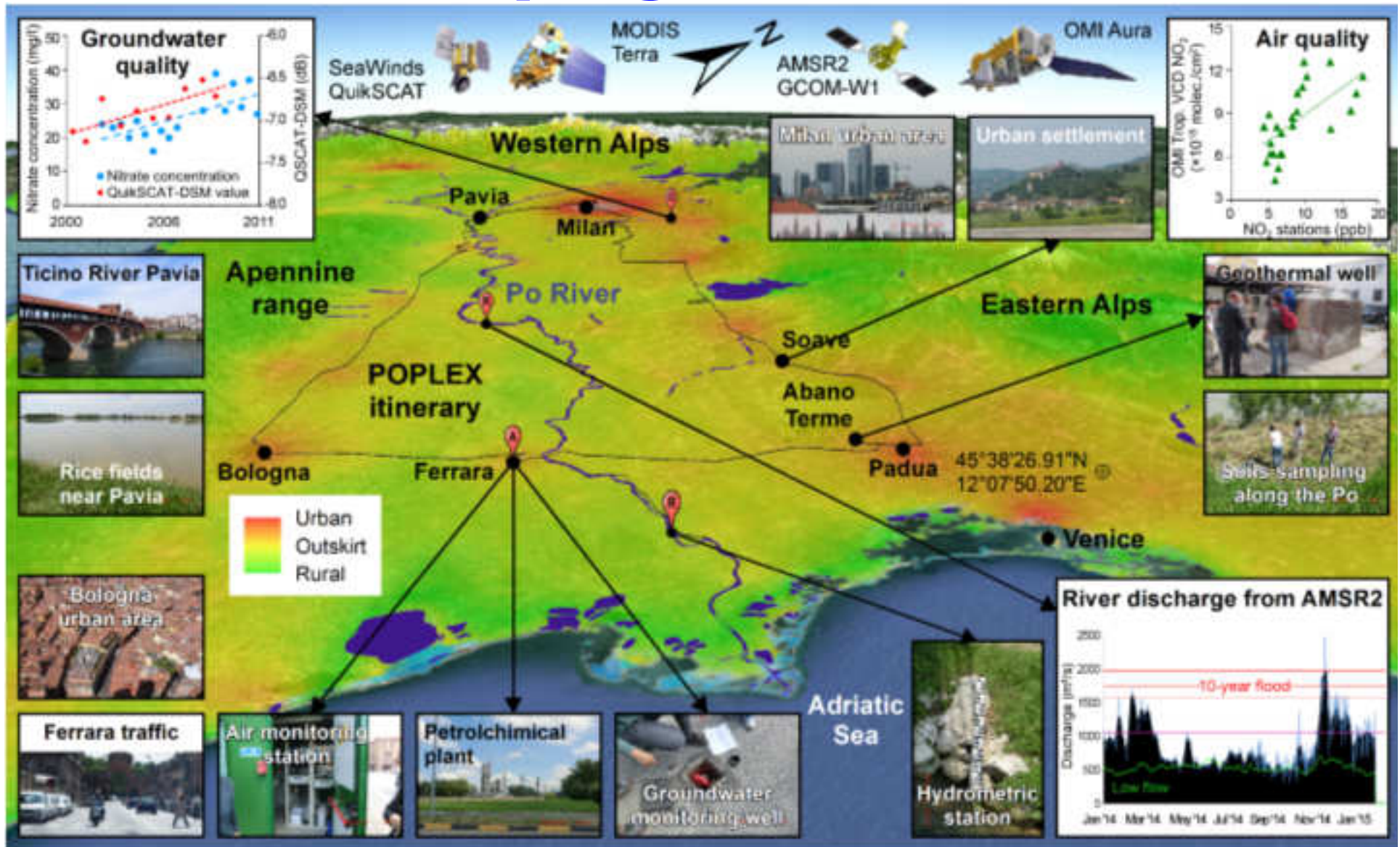
**Q4: Where bio-
environment
monitoring mostly
needed / feasible?**

**Open Interview
24 May 2017**

Where Monitoring mostly needed and feasible

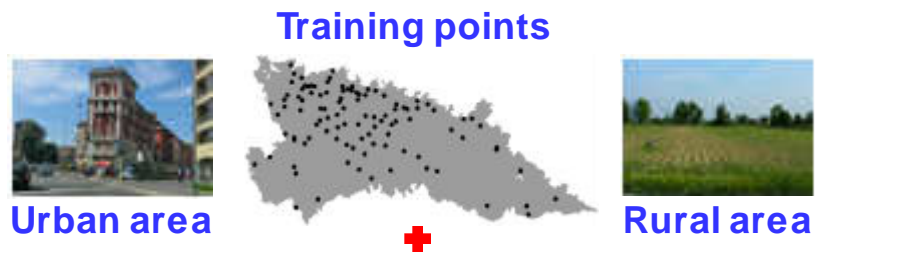
- **No one size fits all:** **Characteristics, patterns, causes/effects, and changes of bio-environments are complex.** **Inadequate monitoring in times/places and generalization may be misleading and resulting in ineffective and costly policies/measures.**
- **To determine how and where to monitor:** **Need to understand and quantify the key controlling bio-geophysical processes in time and space.** **Lacking science understanding and missing pathways impacting bioenvironments.**
- **Feasibility:** **At right location/time to monitor bio-environments, cost effective and innovative methods are needed for it to be feasible.**

PO PLain EXperiment (POPLEX) Field Campaign, 2014 & 2015



Masetti, Nghiem, Sorichetta, Stevannazi, Fabbri, Pola, Filippini, Brakenridge, Eos, 2015

Lombardy, Italy: Groundwater Vulnerability Assessment in the Shallow Aquifer



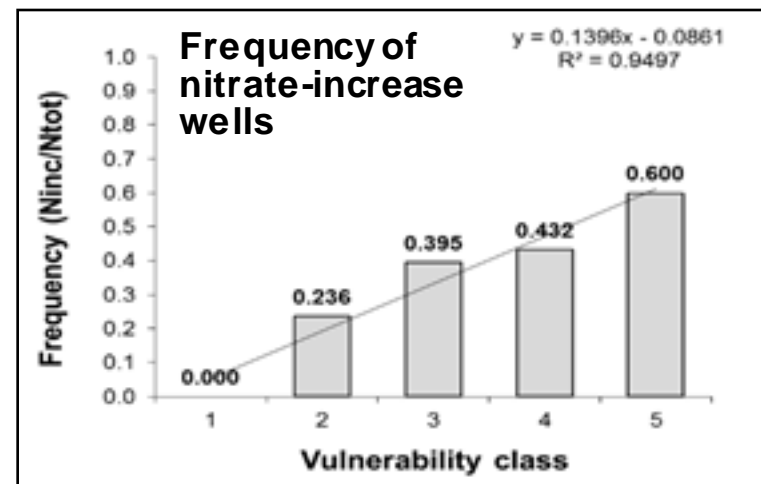
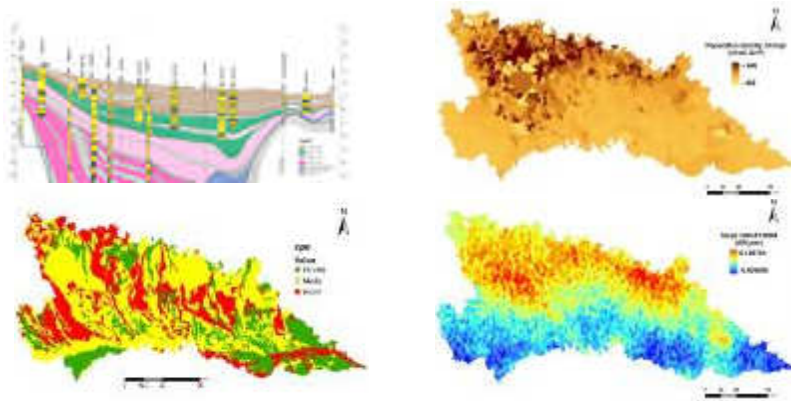
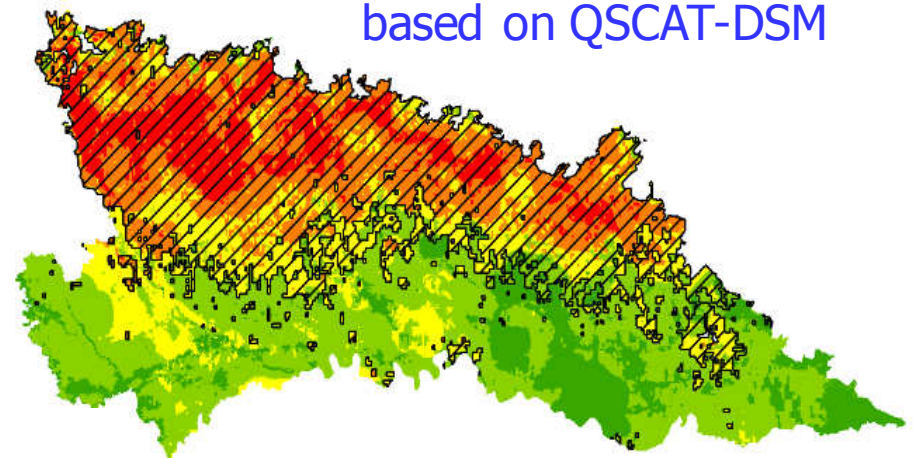
Natural predictors
(not time-dependent)

- ✓ Groundwater depth
- ✓ Groundwater velocity
- ✓ Hydraulic conductivity of the vadose zone
- ✓ Soil protective capacity

Anthropogenic predictors
(time dependent)

- ✓ Population density change
- or
- ✓ Land cover change (QSCAT-DSM slope)
- or
- ✓ Urban change (DUSAF data set)

Groundwater vulnerability maps
based on QSCAT-DSM

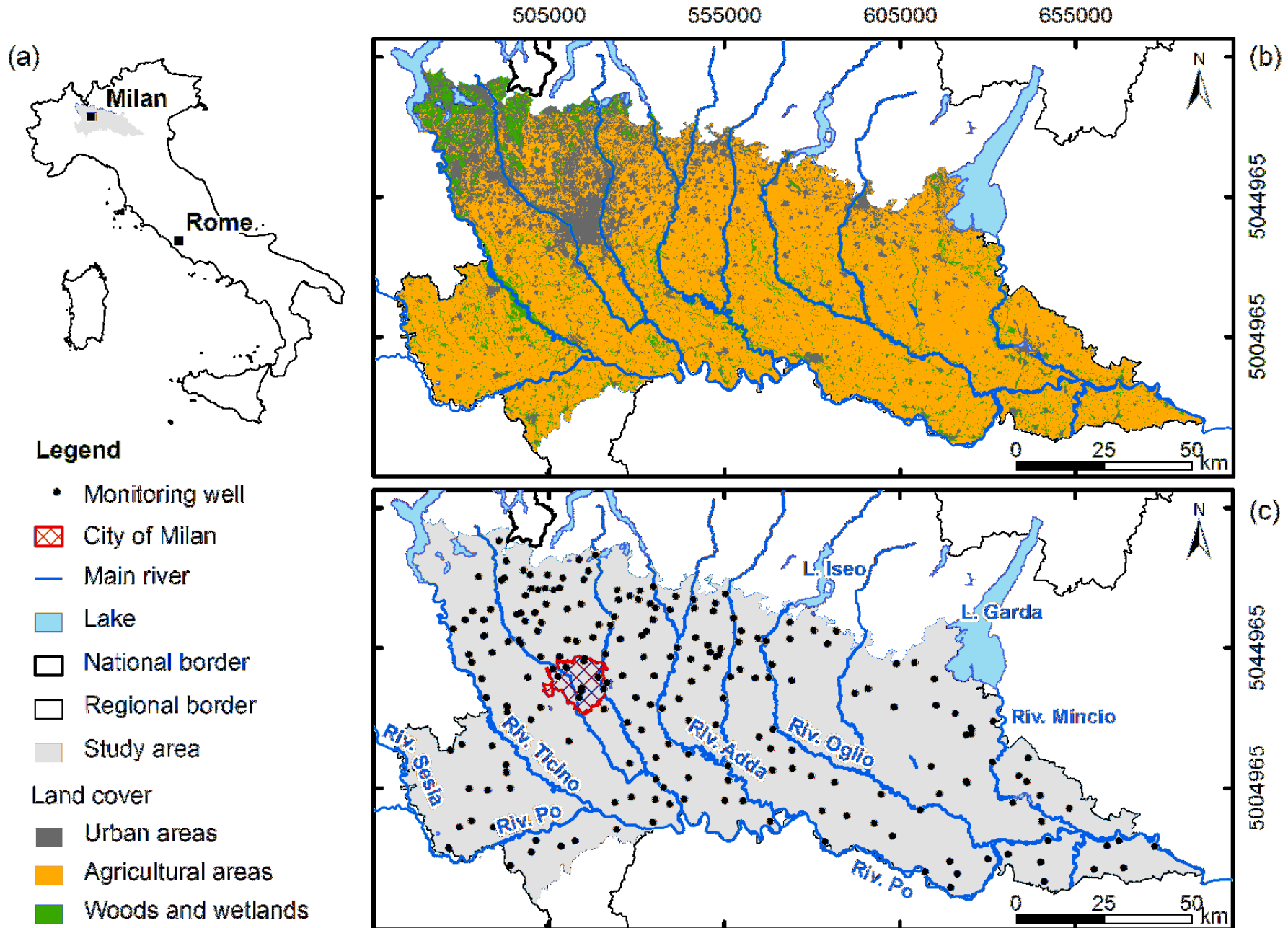


**The Eighth International Conference on Bioenvironment,
Biodiversity and Renewable Energies – BIONATURE 2017**

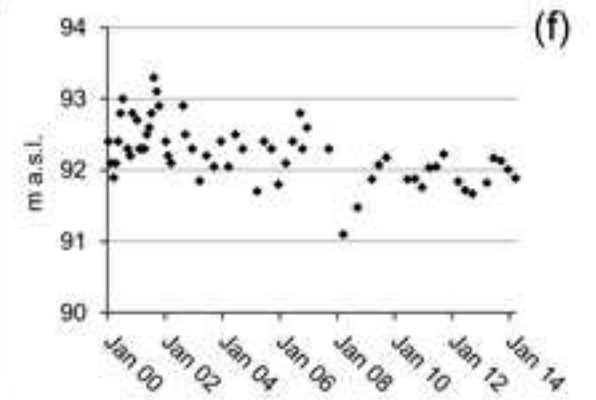
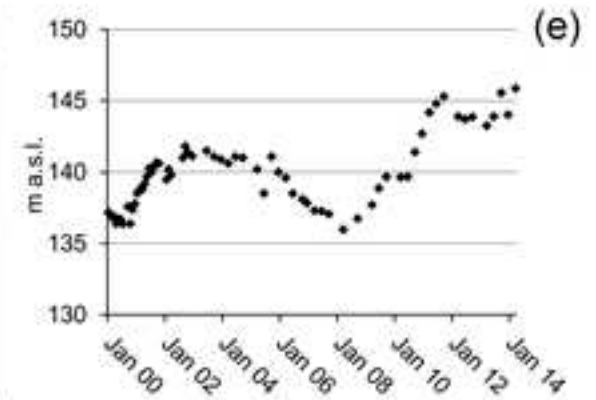
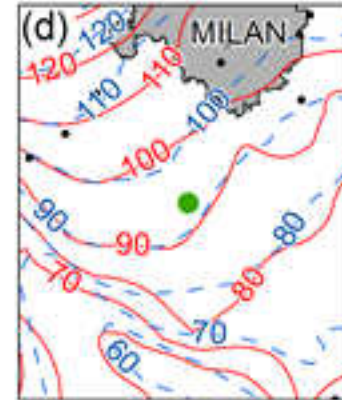
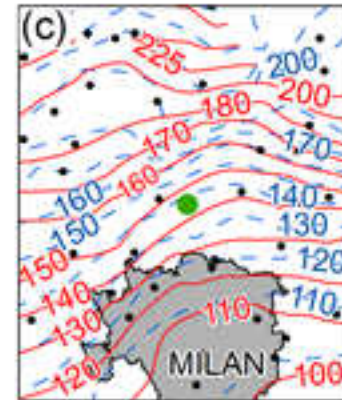
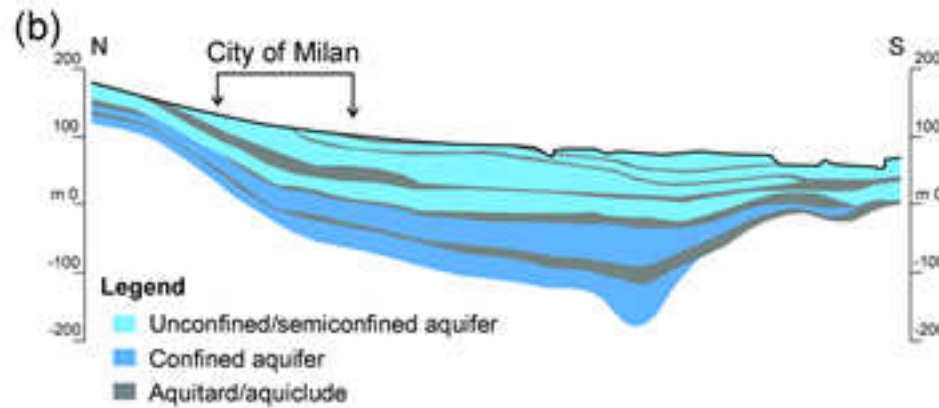
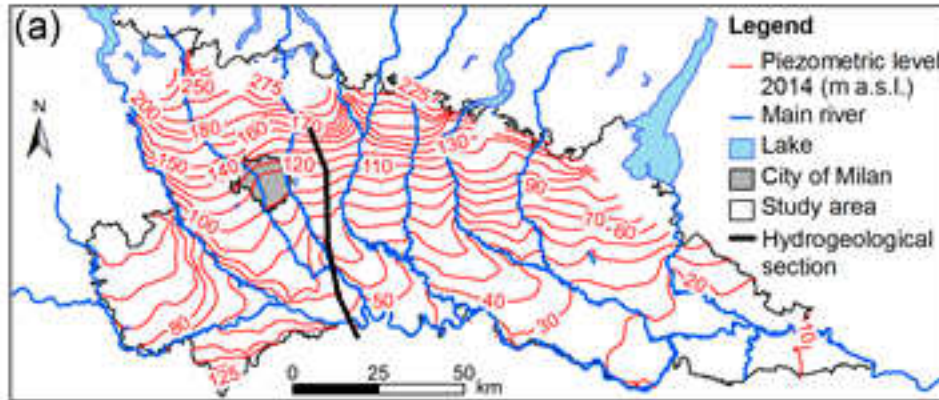
**Q5: Can long-term
projection be made
to safeguarding
bio-environments?**

**Open Interview
24 May 2017**

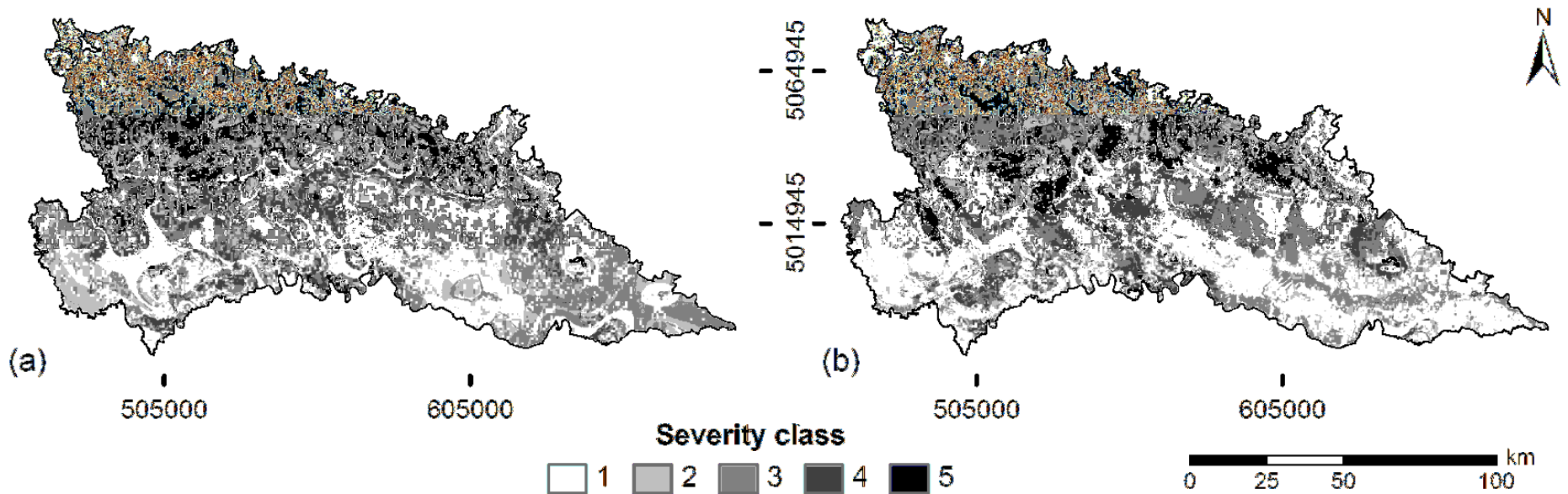
Study Domain – Po Plain in Italy



Hydrogeological Conditions



Year 2020 - Projection of Groundwater Contamination Severity in Two Scenarios



Scenario 1: Rate of rural and urban change estimated from DSM data, assuming no change in water depth.

Scenario 2: Rate of rural and urban change estimated from DSM data, using rate of water depth change estimated from station data.

**The Eighth International Conference on Bioenvironment,
Biodiversity and Renewable Energies – BIONATURE 2017**

**Q6: Challenges of
multi-model
approaches and
model-observation
integrations?**

**Open Interview
24 May 2017**

Multi-model approaches and model-observation integrations

- Consistency and conflicts in model approaches: **May cause opposing/contrasting results and thus large uncertainties. An imperfect way out is multi-model ensembles.**
- Model-observation integrations: **Different definitions, time/space scales and coverage, natural-human coupled systems, inter-disciplinary complexities.**
- **OTHERS ???**

Contact

Son.V.Nghiem@jpl.nasa.gov

<http://urban.jpl.nasa.gov/>